


Part number

CX 01 J8M



Brief description:

male insert, housing for RJ45 connectors, for 1 RJ45 crimp connector, part number CX 8 J6M, 1 module, modular units series MIXO

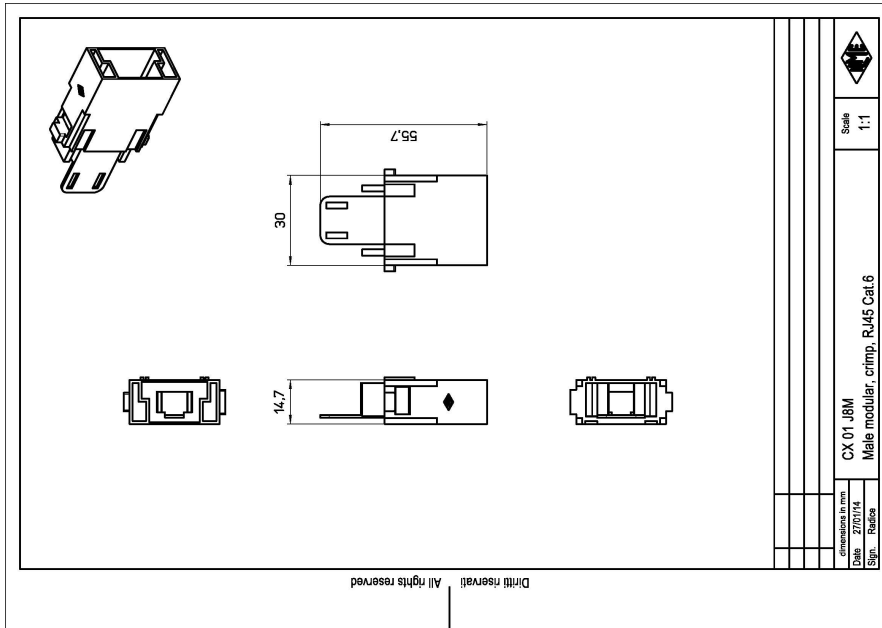
Product description		Approvals / Standards	
Model	male insert	Quality mark	 , EAC
Version	housing for RJ45 connectors	Conformity	
Product type	for 1 RJ45 crimp connector, part number CX 8 J6M	General ordering information	
Family	MIXO series, customizable inserts	EAN13 code	8015747206181
Size	1 module	Tariff number	85369095
Technical data		Packaging Information	
Operating temperature range (min, max)	-40°C ... +70°C	Sub-packaging weight	0,01 kg
IP degree of protection	IP20 without enclosure; IP65/IP66/IP67/IP68 with enclosure	Sub-packaging description	Plastic bag
Further technical details		Sub-packaging quantity	1 Pcs
Characteristics according to EN 61984	10A 250V 4kV 3; 10A 230/400V 4kV 2	Sub-packaging EAN barcode	8015747206358
Insulation resistance	≥ 10 GΩ		
Rated voltage according to UL/CSA	50V		
UL 94 flammability rating	V-0		
Weight	10,00 g		

Part number

CX 01 J8M



Catalogue drawings



Notes

the modular inserts must be installed in suitable frames which in turn are installed in traditional housings or COB panel support